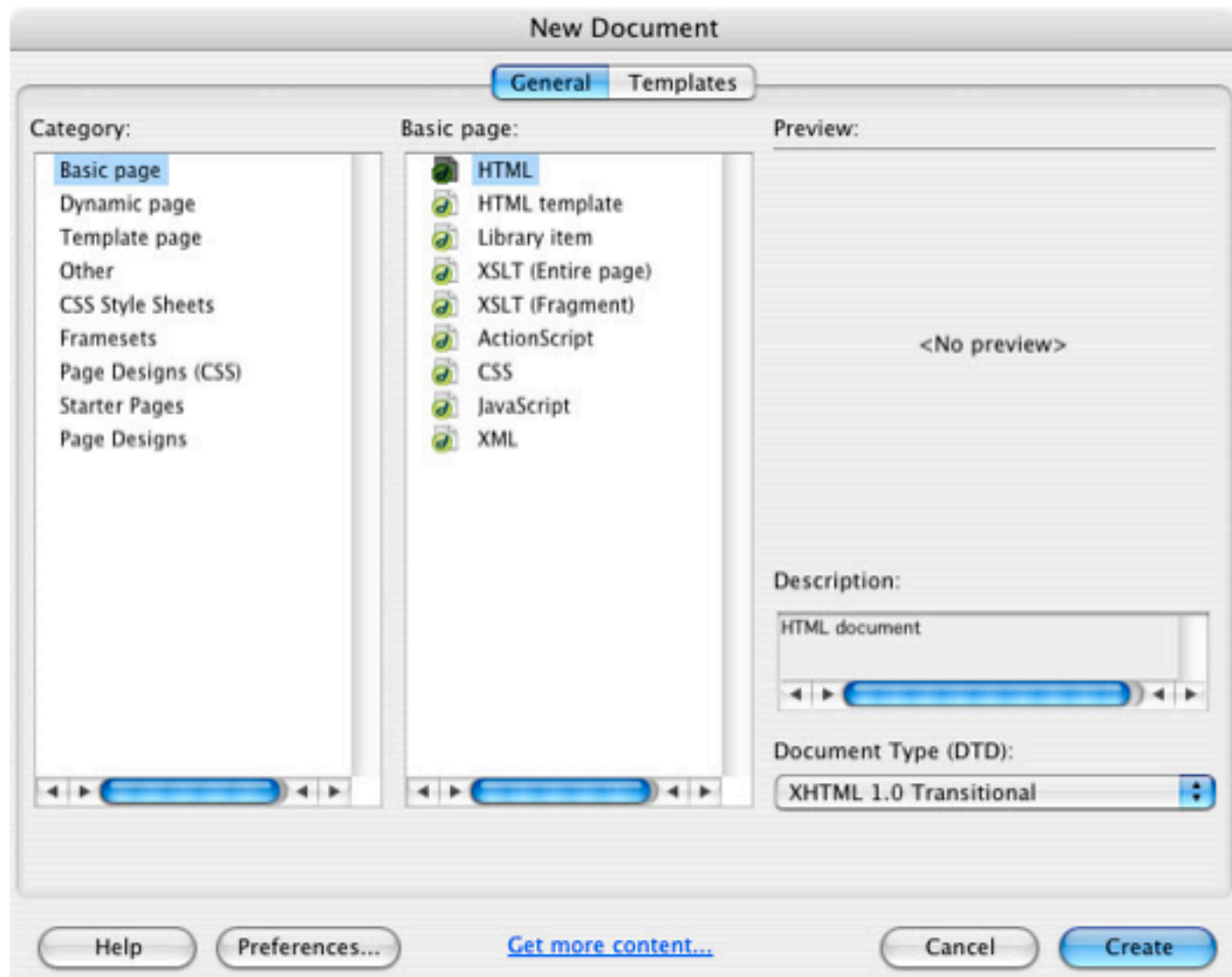


I. Centering a Design Created with the CSS DIV tag

Dreamweaver gives you several ways to center a layout. The most common historically has been to create a table and then center that table on your page. If you want to use CSS, you'll use a very different approach.

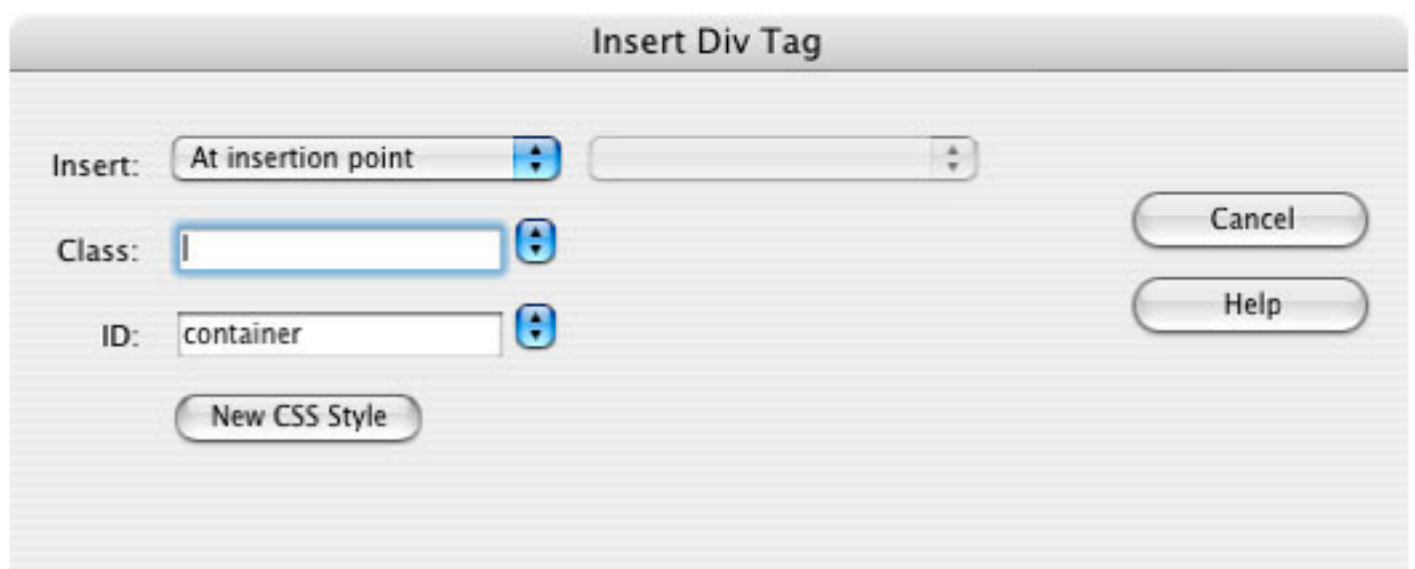
First, you'll create a layout that uses a DIV tag to define the main design area, then you'll center the content.

Step 1: Start with a simple, blank document. Choose File -> New. Create a Basic Page, and make sure HTML is selected.



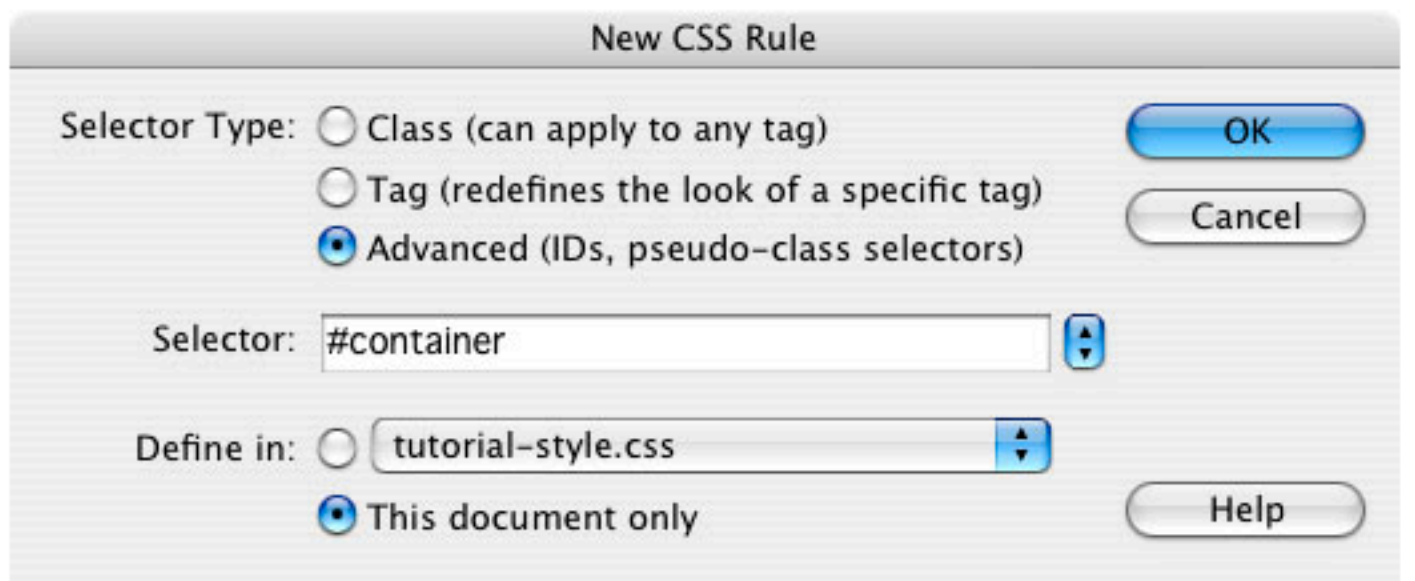
Step 2: On your new page, create a container layer using the DIV tag by choosing Insert -> Layout Objects -> Div Tag (or clicking on the Div icon in the Insert Panel).

Fill in the ID field with the word "container" (all lower case). You should end up with a page like this.



Step 3: Next, you'll create a new CSS style for this Div. Open the CSS panel by choosing Window -> CSS Styles. To create a new style, you have a few options: Right-click anywhere in the panel and choose New. Click the New CSS Rule icon at the bottom of the panel (it's the small one with the plus sign on it). Alternatively, you can choose Text -> CSS Styles -> New.

Step 4: In the CSS dialogue box, select Advanced, and in the box below, type "#container". Be sure that This Document Only is selected, and click OK.



Step 5: In the dialog box that comes up, you want to set the margins on the container to "auto" -- this will cause the container to float in the center of the page, with equal margins on each side.

To set the margins, in the CSS dialog, choose the Box category from the left column, then uncheck the box below Margin -- this lets you set each margin independently. Type "auto" into the boxes labelled Left and Right. Also set the background of the container to #FFFFFF (so that the container will be white).

CSS Rule definition for #container

Category

Box

Type
Background
Block
Box
Border
List
Positioning
Extensions

Width: 500 Float:

Height: Clear:

Padding

Margin

 Same for all Same for allTop: Top: Right: Right: auto Bottom: Bottom: Left: Left: auto

Help

Apply

Cancel

OK

Step 6: You also want to set the width of the main layer while you're here. Make sure Box is still selected and type "760" in the Width box. Be sure that "pixels" are the chosen unit. Now, click "OK".

Congratulations! You've created a centered box and you can put whatever you'd like into that box to create a centered page design.